



## Why Jovak Requires a Professional Landscape Design Before Any Work Begins

**We don't move a shovel until we have a detailed design.**

Why? Because planning is what makes your project smooth, stress-free, and successful.

This guide will show you:

- Why a professional design is essential
- What's included in your plan
- How our process takes you from vision to finished landscape





## Why a Landscape Design Matters

**Every great project starts with a plan.**

Just like building a house requires blueprints, your outdoor space needs a detailed design. A proper plan:

- Brings your vision to life on paper
- Ensures your landscape matches your home's style and character
- Prevents miscommunication between you, the designer, and the crew

Our designers consider every detail — from soil and sun exposure to materials and plant choices — so your new space feels like a natural extension of your home.

## What's Included in a Professional Plan

**A pencil sketch isn't enough.** It often leads to stress, missed expectations, and added costs.

A professional design includes:

- Existing and proposed structures (patios, pools, walls, fences)
- Current and new elevations
- Accurate scale and measurements
- Materials (stone, wood, plants, lighting, water features)

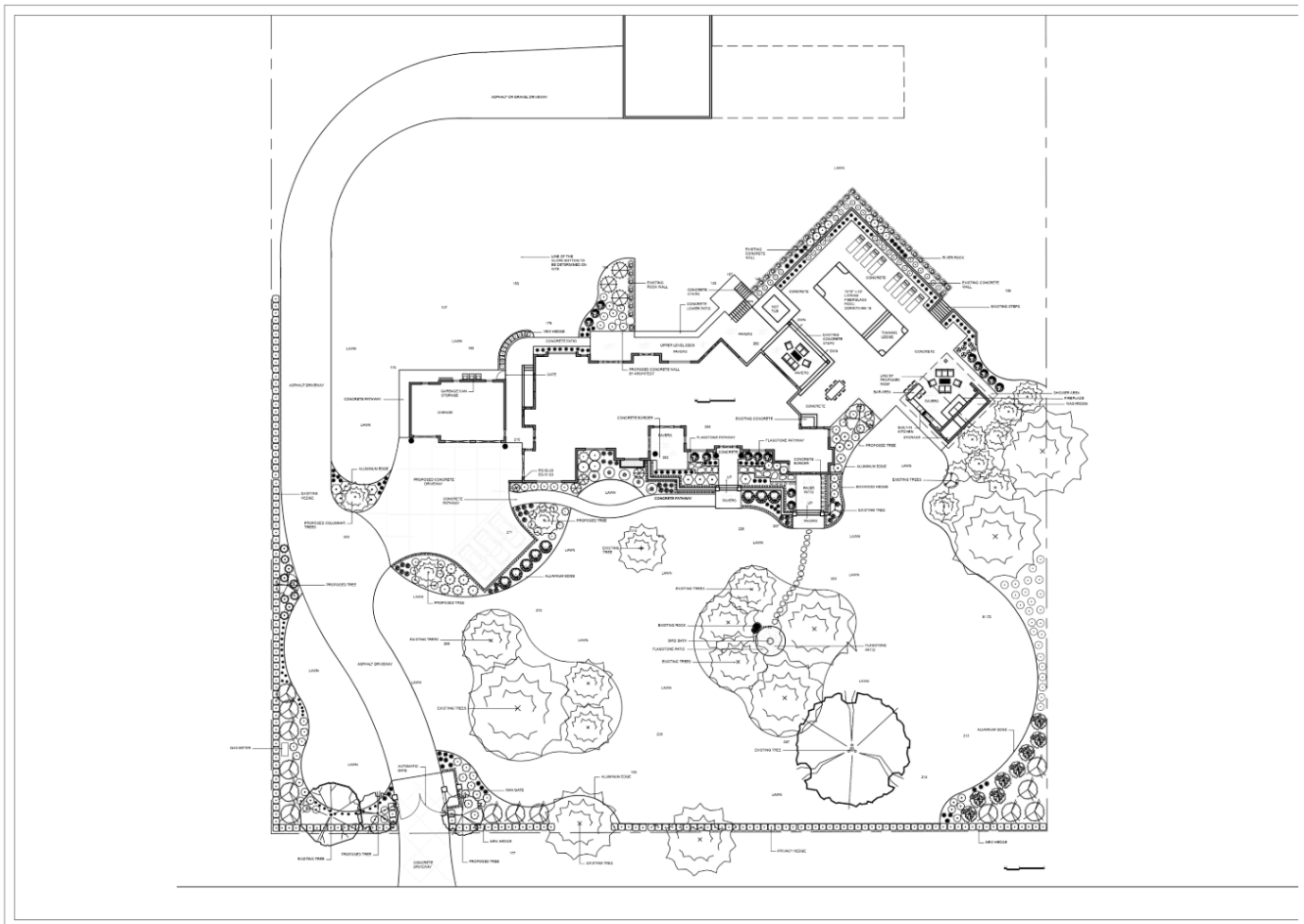
**604.866.7186 | [INFO@JOVAKLANDSCAPE.COM](mailto:INFO@JOVAKLANDSCAPE.COM)**

43760 Keith Wilson Rd. Chilliwack, BC V2R 4B5

[JOVAKLANDSCAPE.COM](http://JOVAKLANDSCAPE.COM)

- Planting and lighting plans
- Utility details (gas, electrical, drainage)

We'll walk you through the 2D plan step by step, and if you'd like, we can create a 3D version so you can fully visualize your new backyard.



604.866.7186 | [INFO@JOVAKLANDSCAPE.COM](mailto:INFO@JOVAKLANDSCAPE.COM)

43760 Keith Wilson Rd. Chilliwack, BC V2R 4B5

**JOVAKLANDSCAPE.COM**



## Why We Require It

**A professional design gives everyone clarity and confidence.**

Here's what it does for you and our team:

- **Clear expectations:** Captures your style, needs, and vision before work starts.
- **Full alignment:** Design, estimating, and installation all work from the same plan.
- **Smooth execution:** The crew has a roadmap that matches your expectations exactly.

Bottom line: **your project runs on time, on budget, and without surprises.**



604.866.7186 | [INFO@JOVAKLANDSCAPE.COM](mailto:INFO@JOVAKLANDSCAPE.COM)

43760 Keith Wilson Rd. Chilliwack, BC V2R 4B5

[JOVAKLANDSCAPE.COM](http://JOVAKLANDSCAPE.COM)



## Our Process

**We follow a proven process to keep your project on track and stress-free.**

1. Consultation with John Van Kammen
2. Design contract + deposit
3. On-site measurements & criteria meeting
4. Presentation of concept, budget, and materials
5. Final design & materials list
6. Install agreement signed
7. Materials ordered
8. Meet the crew & begin installation
9. Progress updates
10. Installation review
11. Walkthrough for any adjustments
12. Fixes completed
13. Final meeting & close-out

Orange = Planning → Share your vision and create the design.

Green = Installation → Watch your project come to life with updates along the way.

Blue = Completion → Ensure every detail is just right.

**604.866.7186 | [INFO@JOVAKLANDSCAPE.COM](mailto:INFO@JOVAKLANDSCAPE.COM)**

43760 Keith Wilson Rd. Chilliwack, BC V2R 4B5

[JOVAKLANDSCAPE.COM](http://JOVAKLANDSCAPE.COM)